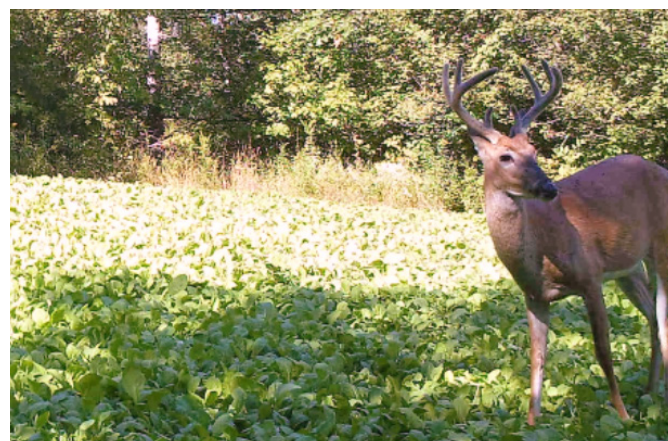


A perennial herb with a deep taproot, high dry matter production, and improved recovery after grazing.

- Grazing herb
- Winter dormant
- Quality summer forage
- Captures water and nutrients below the root-zone of grasses
- Attracts wildlife



Wildlife Food Plot	
CULTIVAR	LB/AC
Choice Chicory	4
Winter Oats	40
Total	44

Choice Chicory is a widely adaptable, flexible, and persistent forage. It has been proven on farms and in trials to improve production both per animal and acre in sheep, beef, and dairy systems. Choice has high metabolizable energy levels and crude protein, and is highly digestible, resulting in excellent animal production.

Seeding Rate: 4 lb/ac, Mix 1 lb/ac Planting Time: Mar-Sept Regions: All First Grazing: 60 days

John Snider • US Marketing Agronomist
541-510-5000 • john@pggseeds.us

Cher Gillson • US Marketing & Sales
503-551-0341 • cher@pggseeds.us



14294 Riches Rd. SE • Silverton, OR 97381
P: 503-873-6498 • F: 503-873-8948
www.pggseeds.us

Ioka Marketing is the distributor for PGG Seeds North America

Grasslands®

Choice

Chicory

A perennial herb with a deep taproot, high dry matter production, and improved recovery after grazing.

PGG seeds